

AUTHENTICATION MANUAL

Company Name	https://arigshop.com (AQUILLIA REAVES LLC)
Company Phone	+1 (989) 773-7697
Company E-mail	Info@arigshop.com
Company Address	2818 S 82ND STREET APT C PHILADELPHIA, PA 19153



TABLE OF CONTENTS



Contents

MISSION STATEMENT:	3
CORE VALUES:	3
ABOUT US:	4
IN HOUSE AUTHENTICATION:	4
FRAGRANCE MARKET:	5
OUR SUPPLIER/S	6
INVOICE TOM FORD:	8
INVOICE:	8
TOM FORD:	10
Parfums de Marly:	15
In-House Collection:	23



Mission Statement

At Arigshop.com, proudly operated by AQUILLIA REAVES LLC, our mission is to provide fragrance enthusiasts with a secure, reliable, and exceptional online shopping experience by offering a curated selection of 100% authentic luxury scents at competitive prices.

We are committed to delivering outstanding customer service and expert product knowledge. Whether you are seeking full retail bottles or meticulously crafted hand-poured decants, our team is dedicated to helping you discover the perfect signature scent tailored to your individual style.

Our goal is to serve as your trusted, transparent destination for niche and designer perfumery, inspiring our customers to make a lasting impression with confidence and complete peace of mind.

CORE VALUES:

- **Uncompromising Authenticity:** Trust is the most vital element of luxury fragrance. All our products are 100% genuine, sourced exclusively from a vetted network of reputable distributors and B2B wholesalers. We guarantee that you will receive the authentic fragrance in its original packaging, complete with verifiable batch codes.
- **Premium Quality Control:** We are committed to providing only the freshest, highest-quality scents. Every bottle undergoes a rigorous inspection upon arrival and is stored in a temperature-controlled environment to preserve the integrity of the olfactory notes.
- **Curated Selection:** We offer a diverse range of Niche and Designer brands. By understanding the market—from mass-appealing Designer fragrances crafted by major fashion houses to artisanal Niche fragrances formulated with rare raw materials—we help you find a scent that fits your taste, occasion, and budget.
- **Transparent Customer Service:** We value our community and strive to provide exceptional service. From detailed product descriptions to upfront pricing with no hidden fees, we ensure your experience with Arigshop is seamless.
- **Industry Expertise:** We possess deep knowledge of scent profiles, olfactory notes, and brand history, allowing us to provide personalized recommendations and root out counterfeit products.

Our Commitment to You

At Arigshop.com, we are passionate about connecting you with your favorite authentic fragrances at exceptional prices. We recognize that shopping online requires absolute trust. That is why AQUILLIA REAVES LLC is 100% committed to operating with complete transparency, secure business practices, and dedicated customer care

By cultivating strong, verified relationships with a trusted network of wholesale suppliers, we maintain a secure supply chain. This allows us to bring you the best of both worlds: the most highly sought-after contemporary perfumes and those rare, vintage gems that are increasingly difficult to source.

We understand that a great scent is the ultimate finishing touch to your personal style. We want you to be completely thrilled with your purchase. If you ever have a question about our authentication process, need a personalized scent recommendation, or require assistance with your order, please do not hesitate to reach out. Our expert team is always here to help you make the perfect choice.

In-House Authentication Guarantee

At Arigshop.com, operated by AQUILLIA REAVES LLC, we understand that absolute authenticity is critical when investing in luxury and niche fragrances. That is why we have implemented a rigorous in-house authentication protocol to ensure that every full bottle and hand-poured decant we offer is 100% genuine.

Our dedicated team possesses deep expertise in the fragrance industry and is meticulously trained to identify even the most microscopic details that distinguish authentic perfumes from sophisticated counterfeits. Upon arrival at our climate-controlled facility, we carefully inspect every single item. Our comprehensive quality control process includes verifying the integrity of the cellophane wrapping, analyzing the weight and precision of bottle hardware and nozzle mechanisms, and evaluating the scent profile to ensure it meets our uncompromising standards of condition and quality.

We guarantee that every fragrance you purchase from Arigshop is 100% authentic, sourced directly through secure supply chains from established B2B distributors and highly reputable wholesalers. We ensure all full-size products are delivered in their original manufacturer packaging, complete with clearly verifiable batch codes. We firmly stand behind the legitimacy of our entire inventory, backing your purchase with a full refund guarantee in the highly unlikely event of an authenticity concern.

At Arigshop.com, we are committed to providing a secure, reliable, and trustworthy shopping experience. We take our responsibility to our customers seriously and continuously go the extra mile to guarantee you receive only the finest, strictly genuine scents that meet our highest standards of excellence.

Understanding the Fragrance Market: Designer vs. Niche

At Arigshop.com, we believe in educating our clients on the nuances of the perfume industry to ensure you make the most informed purchasing decisions. Much like the watch world divides into "Fashion" and "Horology," the fragrance world is distinctly divided into Designer and Niche categories. Understanding these key differences helps illuminate the value, craftsmanship, and pricing of the authentic scents we curate.

1. Branding & Heritage

- Designer Fragrances: These are widely recognized scents created by major fashion houses (e.g., Gucci, Versace, Yves Saint Laurent). They serve as an extension of a clothing or accessory brand, specifically designed to complement the fashion line and target a broad, global audience.
- Niche Fragrances: These are produced by dedicated, artisanal perfume houses (e.g., Boadicea the Victorious, Creed, Xerjoff, Amouage) whose sole, uncompromising focus is the art of perfumery. These brands often boast a long, rich heritage rooted exclusively in scent creation rather than fashion apparel.

2. Price & Production

- Designer: These fragrances are typically mass-produced in massive quantities to be sold in department stores and boutiques globally. The standard pricing reflects the efficiency of large-scale, automated mass manufacturing.
- Niche: These creations are meticulously produced in smaller, highly limited batches. The premium price point reflects the brand's exclusivity, the smaller scale of manual production, and the highly artisanal nature of the final product.

3. Composition & Appeal

- Designer: These scents are specifically formulated for "mass appeal." They are designed to be safe, pleasant, and highly likable by the vast majority of consumers. They frequently follow popular market trends (such as "fresh" or "sweet" profiles) and prioritize strict batch consistency.
- Niche: These scents are proudly artistic, complex, and daring. They prioritize olfactory creativity over mass market appeal. Niche fragrances often evolve on the skin much more dramatically and utilize unique, unconventional scent combinations designed to tell a specific, evocative story.

4. Ingredients & Concentration

- Designer: While crafted with high-quality components, designer scents reliably rely on synthetic compounds to ensure absolute stability, shelf-life, and exact consistency across millions of bottles. They are most commonly sold in Eau de Toilette (EDT) or Eau de Parfum (EDP) concentrations.
- Niche: These luxury fragrances frequently utilize a significantly higher percentage of rare, natural raw materials (such as authentic Oud, Orris butter, or Ambergris) and are formulated with higher perfume oil concentrations (such as Extrait de Parfum). This meticulous blending results in richer aromatic depth, unparalleled sillage, and exceptionally long-lasting performance on the skin.

OUR SUPPLIERS

PerfumeUnlimited: Welcome to Perfume Unlimited LLC, the trusted partner for fragrance retailers, wholesale companies and specialty shops seeking high-quality perfumes at competitive prices. As a leading B2B wholesale perfume seller, we are passionate about providing an exquisite range of fragrances designed to satisfy diverse customer preferences while enhancing your retail & wholesale offerings.

PerfumeUnlimited: Who We Are?

At Perfume Unlimited LLC, we understand the fragrance industry's nuances and how essential it is for businesses to provide their clientele with high-quality and sought-after products. Founded in 2007, our journey began with a singular vision— to bridge the gap between top-tier perfume brands and consumers across the globe. Our team comprises industry experts, fragrance enthusiasts, and dedicated partners who are committed to delivering exceptional service and products.

PerfumeUnlimited: Our Mission

Our mission is simple: to empower businesses in the fragrance sector to thrive by offering an extensive selection of exquisite perfumes at wholesale rates. We strive to maintain high standards of quality while ensuring that you find the perfect fragrances that resonate with your customers. Our relationships with reputable perfume manufacturers allow us to provide exclusive access to unique scents that will set you apart in a competitive marketplace. PerfumeUnlimited is a verified company and are based in the UK with offices all over the world.

NOTE: I have attached an invoice from this supplier for you to review. This shows the quantity of perfumes that were ordered and the price. It also displays our company details and/or account details

. **Awesomeperfumes.com:** Danny, the Founder and CEO of awesomeperfumes.com started a ~~retail perfume shop~~ in a shopping plaza in El Cajon, CA. After years of hard work and great passion for perfumes Awesome Perfumes has become one of the largest online retail fragrance store for thousands of top brand perfumes, colognes and gift sets for men women and kids.

Awesomeperfumes.com: We are a trusted wholesale of designer perfumes and colognes in the US. When logged in as a wholesale account, you can get access to heavily discounted prices and a ~~huge inventory~~ for your retail shops. We carry most popular perfumes and colognes, celebrity perfumes, mini perfume and cologne packs for travelling, hard to find perfumes, and gift sets especially for the holiday season. **Awesomeperfumes.com:** Here are the top five reasons that individual customers and retail shops

buy from us on a regular basis:

1. Awesome Perfumes offers a wide range of **authentic brand name perfumes**, colognes, and gift sets for everyone at a discounted price up to 50% off.
2. We sell **100 % genuine designer fragrances**. Absolutely **no imitations or knockoffs**.
3. We offer free shipping to individual customers in the USA (not valid on wholesale purchases). We also offer free returns on any order within 30 days of purchase. Please read our Shipping and Return policy for more details.
4. We guarantee **on time delivery and 100% satisfaction** with your order by providing excellent customer service.
5. Our website is fast, easy to navigate, and makes it simple to set up individual or wholesale account. All of your information is protected by our **secure server software (SSL)** which fully encrypts all of your personal data (name, address, credit card number) so that it cannot be read by anyone over the internet. Now you can shop with complete confidence and trust that your information is safe.

Awesomeperfumes.com: We are committed to providing satisfying shopping experience to

all

our valued customers. That is how we turned a small retail shop into one of the **largest B2B and B2C** perfume and cologne websites in the US. Thank you for visiting our website. We believe in long-term business relations with our customers and want to partner with you for all of your perfume and cologne needs. You can count on us as your reliable business partner.

NOTE: I have attached an invoice from this supplier for you to review. This shows the quantity of perfumes that were ordered and the price. It also displays our company details and/or account details (AQUILLIA REAVES LLC,) <https://arigshop.com>

INVOICE TOM FORD:



INVOICE #9031
DATE: FEB03,2026

BRANDED PERFUMES WHOLESALE SINCE 2013

2522 Jamacha Road Suit 104
El Cajon CA 92019 USA
Phone: +1 619-293-7663
E-mail: sales@awesomeperfumes.com

SHIPPING ADDRESS

AQUILLIA REAVES LLC
2818 S 82ND STREET
APT C PHILADELPHIA
PA 19153
United States
Tel: +1 (989) 773-769

CUSTOMER

AQUILLIA REAVES LLC
2818 S 82ND STREET
APT C PHILADELPHIA
PA 19153
United States
Tel: +1 (989) 773-769

PAYMENT METHOD
BANK TRANSFER

SHIPPING METHOD
UPS UPS

supplier details which shows their company details

ITEM	PRICE	QTY	ITEM TOTAL
TOM FORD LOST CHERRY 3.4 EDP SKU#: 543584	\$345	23	\$7935

supplier price with shipping tax

All shipments are triple checked. Please note, Once the shipment is handed over to the any carrier Awesome Perfumes responsibility ends. Please carefully inspect the shipment for any damage and report to the driver at the tim of the drop-off. Carriers do not accept claims that are reported after the driver leaves.Do not sign without inspecting your merchandise and doing a box count. We recommend taking a photo once the shipment is received by your company.Awesome Perfumes will not be responsible for any missing boxes/items if a box count is not performed at the time of the drop-off. We recommend getting full insurance with the carrier prior to shipping goods. We will not accept returns that are not checked in and notified within 72 hours of receiving the order.Please send email to info@awesomeperfumes.com with photos of damages.

Subtotal	\$7935
Shipping	\$190
Total (USD)	\$8124
Total Due	\$00.00



Perfume Unlimited (L.L.C)

P.O. Box: 39119, Dubai - UAE | T: +971 4 225 6730 | sales@perfumeunlimited.com | www.perfumeunlimited.com

عطور مالها حدود (ذ.م.م)

ص.ب. ٣٩١١٩ دبي - ا.ع.م. | تليفون: +٩٧١ ٢٢٥ ٦٧٣٠

TRN-10022 15380 00003

supplier details which shows their company details

Commercial Invoice

02-04-2026

Bill To

AQUILLIA REAVES LLC
2818 S 82ND STREET APT C PHILADELPHIA, PA 19153

Sales Order 261056041

Customer PO : 2026-123
Customer Account No : CIC0003
Customer VAT Code :
Currency : USD
Sales Person : RICKY

Ship To

2818 S 82ND STREET APT C PHILADELPHIA, PA 19153
PHILADELPHIA, Pennsylvania
United States

Table with columns: S No., Barcode, Item Description, UOM, Qty, Price, Total(Excl VAT), Vat%, VAT Amount, Total Amount. Contains 8 rows of product data.

supplier price with shipping tax

Total (PCS) : 34 Total (SETS) :
Amount In Words : US Dollar Four Thousand Fifty-One and Ninety-Eight cent Only
Payment Terms : Net 7 Paid
Notes : AQUILLIA REAVES LLC USA DHL Packing 1

SubTotal 3,549.50
Discount 0.00
Freight 325.00
Net Total 3,874.50
Tax 177.48
Grand Total 4,051.98

Received By, Checked By, Delivered By
Name & Sign :

TOM FORD:

Inspection Protocol for Tom Ford Lost Cherry (and most Private Blend 100ml bottles).

Check the packaging: Authenticating a **Tom Ford Lost Cherry (100ml)** while it is still inside a **sealed box** is one of the hardest challenges in the industry because high-end "super fakes" have become very good at copying packaging. However, there are distinct "tells" that counterfeiters almost always get wrong. Here is the **Arigshop Inspection Protocol** for a sealed Tom Ford 100ml box:

1. The Cellophane (The "Wrap")



Geniun cellophane is thin, crisp and fits box like a second skin

This is the first line of defense. Tom Ford Quality Control (QC) is extremely high.

The Texture: Genuine cellophane is thin, crisp, and fits the box like a second skin. It should not feel thick, rubbery, or loose.

- **The Seams:** Authentic Tom Ford wrapping is typically folded in a neat "envelope" or "cigarette" style at the top and bottom. The heat seals should be clean and precise.
 - o *Red Flag:* Messy glue residue, uneven folds, or a seam that runs down the exact center of the front or back face (it is usually on the side or bottom).

2. The Box Color & Texture



The Red: Lost Cherry box has a very specific "candy apple" to "deep cherry" red. Counterfeits often get this wrong—looking too dark (maroon) or too bright (fire engine red).

The Texture: The cardboard itself should have a distinct, high-quality **cross-hatch or linen-like texture**. It is not smooth, glossy cardboard. You should be able to feel the texture with your fingernail.

Construction: The box edges must be sharp and 90 degrees. Fakes often have rounded or "mushy" corners due to cheap cardstock.

3. The Box Sticker & Label

On the textured cardboard box (the "pedestal" style box used for Private Blends), the front branding is indeed a **high-quality paper/foil label (sticker)** glued onto the box.

□ **Why it causes confusion:** On some batches, there is a very slight debossing

(indentation) in the cardboard where the sticker sits, making it sit flush. On newer batches (especially post-Estée Lauder acquisition), it is often just a label applied directly to the surface.

The "Tell" is Quality, not the Sticker itself:

- o Real: The sticker has a **matte, fibrous texture** (like heavy paper), and the gold font is slightly raised or feels premium. **It is perfectly centered.**
- o Fake: The sticker looks like shiny, cheap plastic (vinyl). The edges peel up easily, or the red color of the sticker doesn't match the red color of the box.

4. The Bottom Label & Batch Code (Critical)

Flip the box over. This is where most fakes fail.

Box edges in 90 degrees and must be Sharp

Box edges in 90 degrees and must be Sharp



- **The Batch Code:** You should see a 3-character code (e.g., **A62, B42**).

o **Check:** This code is usually **printed/stamped** onto the bottom label in dot-matrix style or embossed into the carton. While "dot-matrix" (the little dots making up the numbers) was the standard for years, **Tom Ford (Estée Lauder)** uses multiple production facilities. **HOWEVER** It is **rarely** a sticker.



Verify: Run this code on **CheckFresh.com**. It should return a production date (e.g., "Produced 2023-06"). If the code is invalid or dates back to 2010 (before the perfume launched), it's fake.

The Text: The ingredient list and "Made In" text should be sharp. Fakes often have typos (e.g., "Ingredints" missing an 'e', or bad spacing in "New York").

□ **Recycling Symbols:** The "Green Dot" symbol (two arrows) should be clearly printed.

5. The "Shake" Test

Genuine Tom Ford packaging has a high-quality inner liner (corrugated cardboard) that holds the bottle tight.

The Test: Shake the box gently.

- o *Real:* There should be very little movement. It feels solid.
- o *Fake:* You will often hear the bottle rattling around or thudding against the sides because the inner liner is cheap or missing.

6. If you decide to open ONE unit (For "Vetting"):

If you open one box to verify the batch for your records, look for these two definitive signs:

The Hexagon: Look inside the spray nozzle hole. Authentic Tom Ford nozzles often have a tiny **hexagonal** shape inside the actuator, not a simple round circle.

The Juice - **The Truth About the Color**

- o The **Bottle is Red**, Not the Liquid: The authentic Tom Ford Lost Cherry 50ml and 100ml bottles are made of red-lacquered glass. **The glass itself is tinted deep red.**
- o **The Liquid is Pale Yellow/Clear:** The actual perfume liquid inside is a standard pale golden-yellow (like white wine or champagne). **It is NOT red.**
The "Fake" Tell: Ironically, if you ever see Lost Cherry liquid decanted into a clear vial and the liquid is **bright red (like Kool-Aid), IT IS FAKE.** Luxury brands rarely use heavy red dyes in perfumes because it would stain customers' white shirts and blouses.

7. Pricing

Sponsored products :

Product Name	Price	Retailer
Tom Ford Lost Cherry Eau de...	\$352.99	Maple Prime
Tom Ford Lost Cherry Eau de...	\$119.99	Eclatcharms...
Tom Ford TF Tom Ford Lost Cherr...	\$74.87	Shein
Tom Ford Electric Cherry For...	\$187.79	FragranceNet...
Lost Cherry Fragrance Oil...	\$4,741.30	Bulk Apothec...
TOM FORD Lost Cherry Eau de...	\$615.00	Sephora
Tom Ford Lost Cherry Eau de...	\$119.99	Keltrana
Tom Ford Cherry Smoke EDP 1.0...	\$170.00	Jomashop.com

Our competitor pricing

□ This shows that from a price point, our perfumes are authentic. If they were counterfeit, they would be much cheaper to purchase.

Quick Cheat Sheet for Your Staff:

1. Is there a Hexagon inside the nozzle? (Yes = Pass)
2. Is the liquid Pale Yellow? (Yes = Pass)
3. Is the cap heavy? (Yes = Pass)
4. Does the Batch Code match the box? (Yes = Pass)

Parfums de Marly:

Inspection Protocol specifically for Parfums de Marly Greenley (and similar "Fresh Collection" bottles like Sedley/Percival).

Parfums de Marly is heavily counterfeited, but the fakes often fail on **weight** and **fine glass details**.

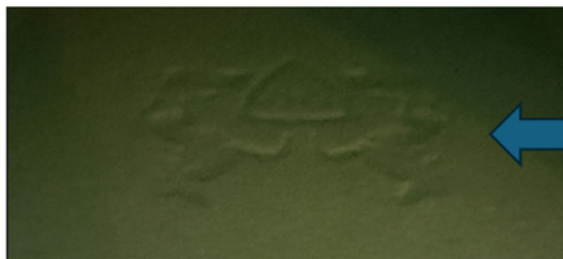
Arigshop Inspection Protocol: Parfums de Marly Greenley 1. The Box Structure & Texture

- **The "Pedestal" Box:** Greenley comes in a sturdy box where the base acts as a pedestal. The cardboard should have a distinct **horizontal grain texture** (ribbed feel). Newer PdM box versions are much thinner but still high quality cardboard.
- **The Logo:** The "1743" and the Horses logo on the front of the box should be embossed (raised) and metallic silver. The print must be razor-sharp; fakes often look "blobby" or the silver foil peels at the edges.



embossed and high quality foil

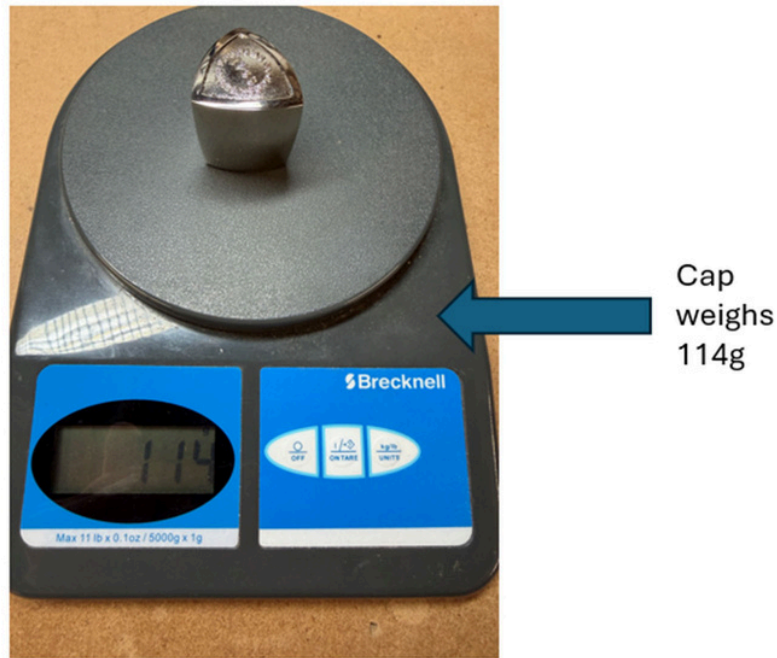
- **The Interior:** When you lift the lid, the bottle should sit snugly in a velvet-feel or high-quality foam insert. Fakes often use cheap, crunchy plastic trays.



Interior of box confirms the embossing

2. The Cap (The "Heavy Metal" Test) This is the single easiest way to spot a fake PdM.

- **Weight:** Authentic Parfums de Marly caps are made of solid metal alloy and are **extremely heavy** for their size.
 - *Real:* Feels like a paperweight.
 - *Fake:* Feels like lightweight plastic coated in chrome.



The Fit: The cap is friction-fit (it clicks firmly). If you pick up the bottle by the cap, it should hold the weight of the full bottle without slipping off.

3. The Glass & The Horses (Embossing)

The Glass Color: Greenley features a stunning **translucent green gradient** glass. The glass should be smooth and clear, with no air bubbles trapped in the walls.

The Horses (Front): The iconic two horses are molded directly into the glass.

- o *Real:* The details are sharp. You can clearly see the separation of the legs and the tails.
- o *Fake:* The horses look "melted" or smooth, lacking muscle definition. Fakes also suffer from "bulge" eye on the horses.

The Dip Tube: Look through the green glass. The internal tube should be thin and barely visible (or straight). Fakes often have thick, ugly white tubes that curl excessively at the bottom.

□



Clear and straight dip tube

4. The Atomizer & Nozzle Remove the cap and look at the sprayer.

The Collar: The metal collar under the sprayer should be smooth and sit perfectly flush with the glass.

The Nozzle: Authentic PdM sprayers disperse a fine, wide mist. Fakes often "spit" or stream.

Under the Hood: If you look inside the cap, you should see a plastic liner (often white or black) that ensures the friction fit. It shouldn't just be bare metal.



5. The Bottom Label & Batch Code Flip the bottle over.

The Label: It is typically a circular silver/metallic sticker. The text "Parfums de Marly" and "Made in France" should be clear.

The Batch Code: This is critical.

- o It is usually a **6 or 7-digit code** (mix of numbers and letters, e.g., **1380315**).
- o It is often printed directly onto the sticker or laser-etched near the edge of the glass bottom.
- o *Match:* It **MUST** match the code embossed/printed on the bottom of the box.

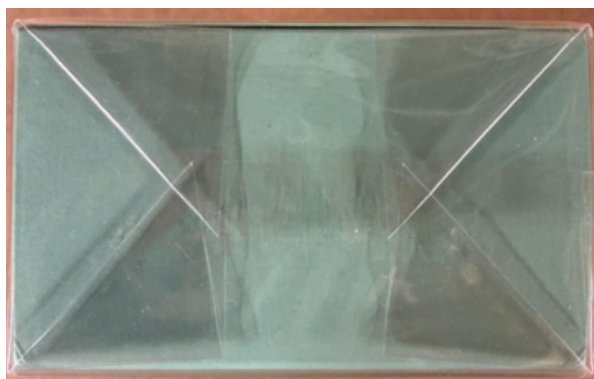


6. The Scent Profile (Juice Check)

Greenley Notes: Crisp Green Apple, Cashmere Wood, Oakmoss, and Petitgrain.

The Smell: It should open extremely bright and fresh. Fakes often smell excessively of alcohol (rubbing alcohol) for the first 30 seconds or smell like vague "soap" without the sharp apple note.

7. Box Cellophane seal should be crisp and wrapped like an expensive present. Cellophane shown in order Top, Bottom, Right, Left when viewed from Front surface.





8. The Box Weight should be 1lb 2.4oz.



Other PdM's should weigh around the same...



- 3 **Does the dip tube look subtle?** (Yes = Pass)
- . **Does the Batch Code match the box?** (Yes = Pass)
- 4
- .

In-House Collection:

We have an extensive in-house collection of **Authentic perfumes**. We **own** everything we **sell**. This way we always have a control unit to **verify authenticity** of every item in our resell inventory from **bottles to boxes** and **full presentation**.

BOTTLES CONTROL:









FULL PRESENTATION CONTROL:



